



## South Park

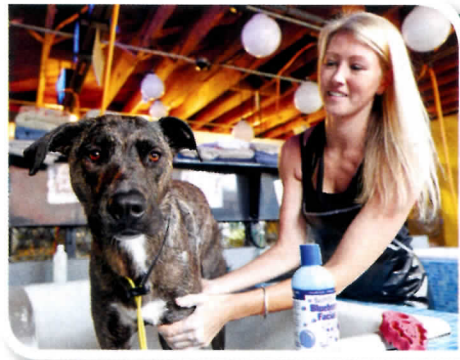
BY BONNIE NICHOLLS ■ PHOTOGRAPHS BY ROB ANDREW

South Park sprang to life at the turn of the 20th century as a ritzy San Diego residential district and expanded with a new trolley line and the 1915 Panama–California Exposition. Now, a hip, walkable, urban neighborhood of restaurants, shops, and craft beer breweries is nestled among historic Craftsman- and Spanish Colonial-style homes. These businesses usher in each season with a festival called South Park Walkabout, where shops stay open late, restaurants serve bites from their menus, and musicians entertain the crowd.

### BY THE NUMBERS

# 2006

Year that **Hamilton's Tavern** (named after the late Herman Hamilton, a World War II veteran and self-proclaimed mayor of South Park) opened



Baths that **South Bark Dog Wash** provides to both dogs and cats each year

# 12,000



### REBECCA'S COFFEE HOUSE

If you stay after night falls, head to this java hub to hear live local music. 3015 Juniper Street. (619) 284-3663; [rebeccascoffeehouse.com](http://rebeccascoffeehouse.com).

### HISTORICAL 30TH & FERN

This shopping district features a selection of businesses, including Progress pictured, (left), a modern home goods and furniture shop; and Graffiti Beach, a boutique that showcases emerging designers and artists. [30th-and-fern.com](http://30th-and-fern.com).



### PLUM POTTERY

Learn to throw pots in a ceramic wonderland. Reservations are required for classes. 2361 30th Street. (619) 584-7151.

### STUDIO MAUREEN & THE NEXT DOOR GALLERY

Shoppers and collectors can browse contemporary crafts, jewelry, and wearable art. 2963 Beech Street. (619) 233-6679; [studiomaureen.com](http://studiomaureen.com).



Local designers and artists featured by **Graffiti Beach** boutique

# 25

# 1914

Year that San Diego's oldest surviving fire station, **Fire Station No. 9**, was built (the station is now home to South Park Fitness)

AAA.com

## EAT

### BUONA FORCHETTA

This Italian spot serves Neapolitan and classic pizzas, fresh pasta, and salads. Try the *sottoterra* salad with warm parsnips. 3001 Beech Street. (619) 381-4844; [buonaforchettasd.com](http://buonaforchettasd.com).

### BIG KITCHEN CAFE

Savor an avocado, cream cheese, and chive omelet at this restaurant serving breakfast and lunch only. 3003 Grape Street. (619) 234-5789; [bigkitchencafe.com](http://bigkitchencafe.com).



### STATION TAVERN

Outdoor picnic tables and a kids' play area give a family-friendly vibe to this burger spot. Try the black bean burger with sweet potato fries. 2204 Fern Street. (619) 255-0657; [stationtavern.com](http://stationtavern.com). **W**

Call to confirm hours and availability of businesses, attractions, and events before you visit. Be sure to designate a driver if you plan to drink at an event where alcohol is served.